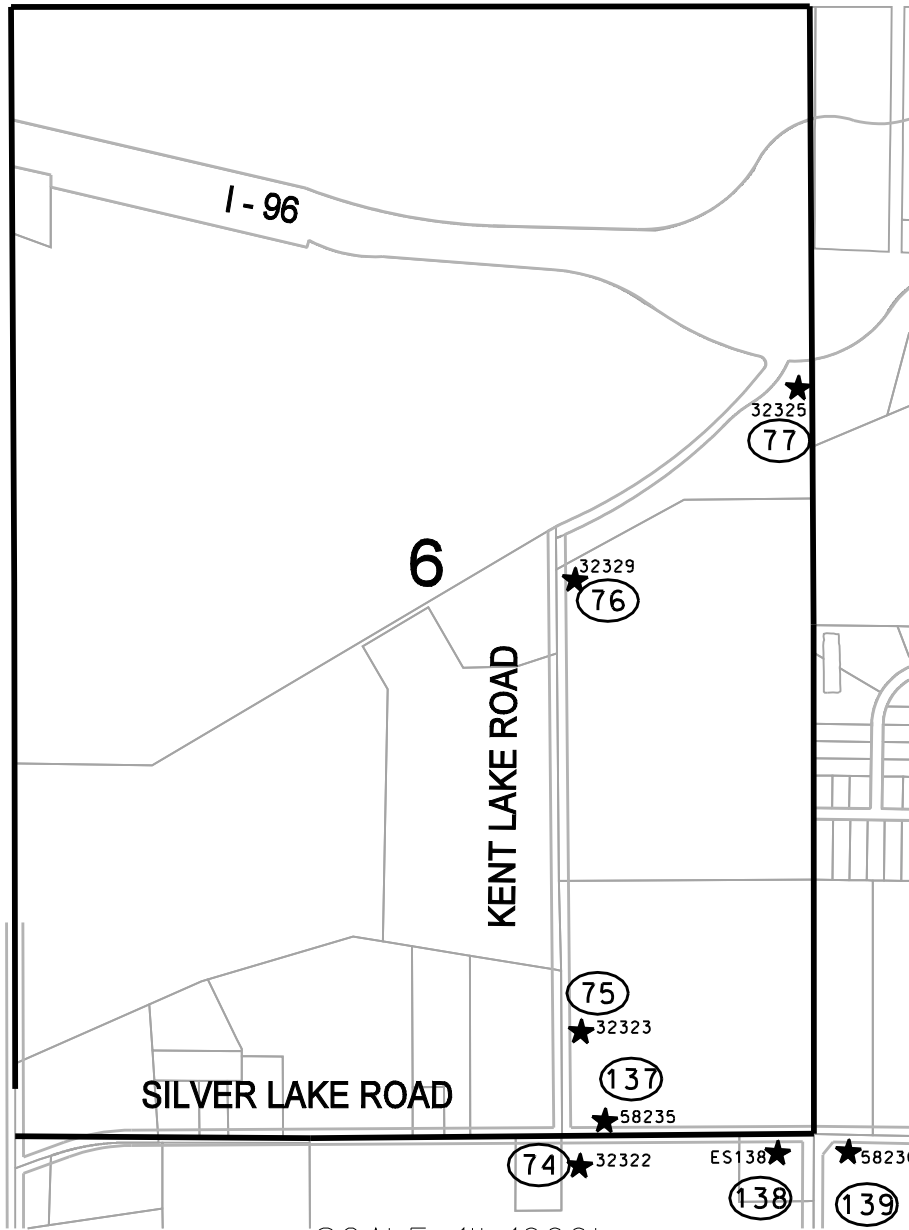
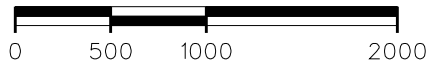


MILFORD TOWNSHIP

GREEN OAK TWP, LIVINGSTON COUNTY



SCALE: 1"=1000'



LYON TOWNSHIP BENCH MARKS
SECTION 6, T-1-N, R-7-E

Copyright © 2006 Giffels-Webster Engineers, Inc. No reproduction shall be made without the prior written consent of Giffels-Webster Engineers, Inc.



Giffels-Webster Engineers, Inc.
ENGINEERS LAND SURVEYORS PLANNERS LANDSCAPE ARCHITECTS
2871 BOND STREET, ROCHESTER HILLS, MI. 48309
(248) 852-3100

DATE: 03/31/06	CHECKED BY: JWB/KS/MD	DATE: 3/06	SCALE: 1"=1000'
DRAWN: JJK/RAS	JWB/KS/MD	3/06	SHEET: 1 OF 2
DESIGN:			
SECTION: 6	T-1-N, R-7-E	JOB No:	

LYON TOWNSHIP BENCH MARKS

SECTION 6, T-1-N, R-7-E

VERTICAL DATUM ESTABLISHED BY NGVD 29 STANDARD

- #75** TAG #32323 893.30
MAG NAIL IN THE WEST FACE OF A UTILITY POLE LOCATED ON THE EAST SIDE OF KENT LAKE ROAD +/- 1/4 MILE NORTH OF SILVER LAKE ROAD
- #76** TAG #32329 906.75
MAG NAIL IN THE WEST FACE OF A UTILITY POLE LOCATED ON THE EAST SIDE OF KENT LAKE ROAD AT THE SOUTH END OF CURVE
- #77** TAG #32325 900.91
MAG NAIL IN THE NORTHWEST FACE OF A UTILITY POLE LOCATED AT THE SOUTHEAST CORNER OF KENT LAKE ROAD AND GRAND RIVER
- #137** TAG #58235 942.36
CONCRETE NAIL ON THE NORTH SIDE OF SILVER LAKE ROAD AND +/-200' EAST OF KENT LAKE ROAD



DATE: 03/31/06	CHECKED BY	DATE	SCALE: N/A
DRAWN: JJK/RAS	JWB/KS/MD	3/06	SHEET: 2 OF 2
DESIGN:			
SECTION: 6	T-1-N, R-7-E		JOB No: